



WOOD - PAWCATUCK
Wild and Scenic Rivers



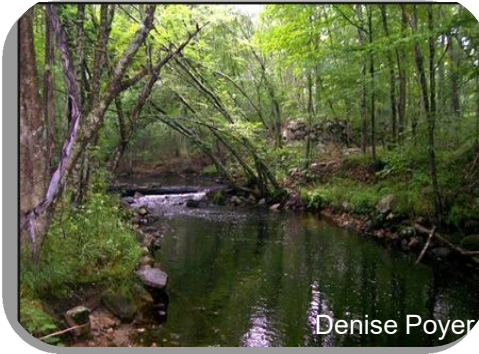
Wood - Pawcatuck Watershed
A National Wild and Scenic River
System

Objectives

1. National Designation
2. Stewardship Council and Stewardship Plan
3. Stewardship Council Activities in Hopkinton



Susan Shaw painting in a video by Ayla Fox



From the Wild and Scenic Rivers Act

1968

“...certain selected rivers of the Nation which possess outstandingly remarkable scenic, recreational, geologic, fish and wildlife, historic, cultural, or other similar values, shall be preserved and protected for the benefit and enjoyment of present and future generations.....”

“Outstandingly Remarkable Values”

1. Geology/Hydrology



Roger Barthelet

Green Fall River and Gorge, Voluntown, CT

**“Outstandingly
Remarkable Values”**

**2. Exceptional
Ecosystems**



Wood Ducks in Wood River, Hope Valley, Denise Poyer

**“Outstandingly
Remarkable Values”**

**3. Exemplary Cultural
Resources**



Canonchet. Mill

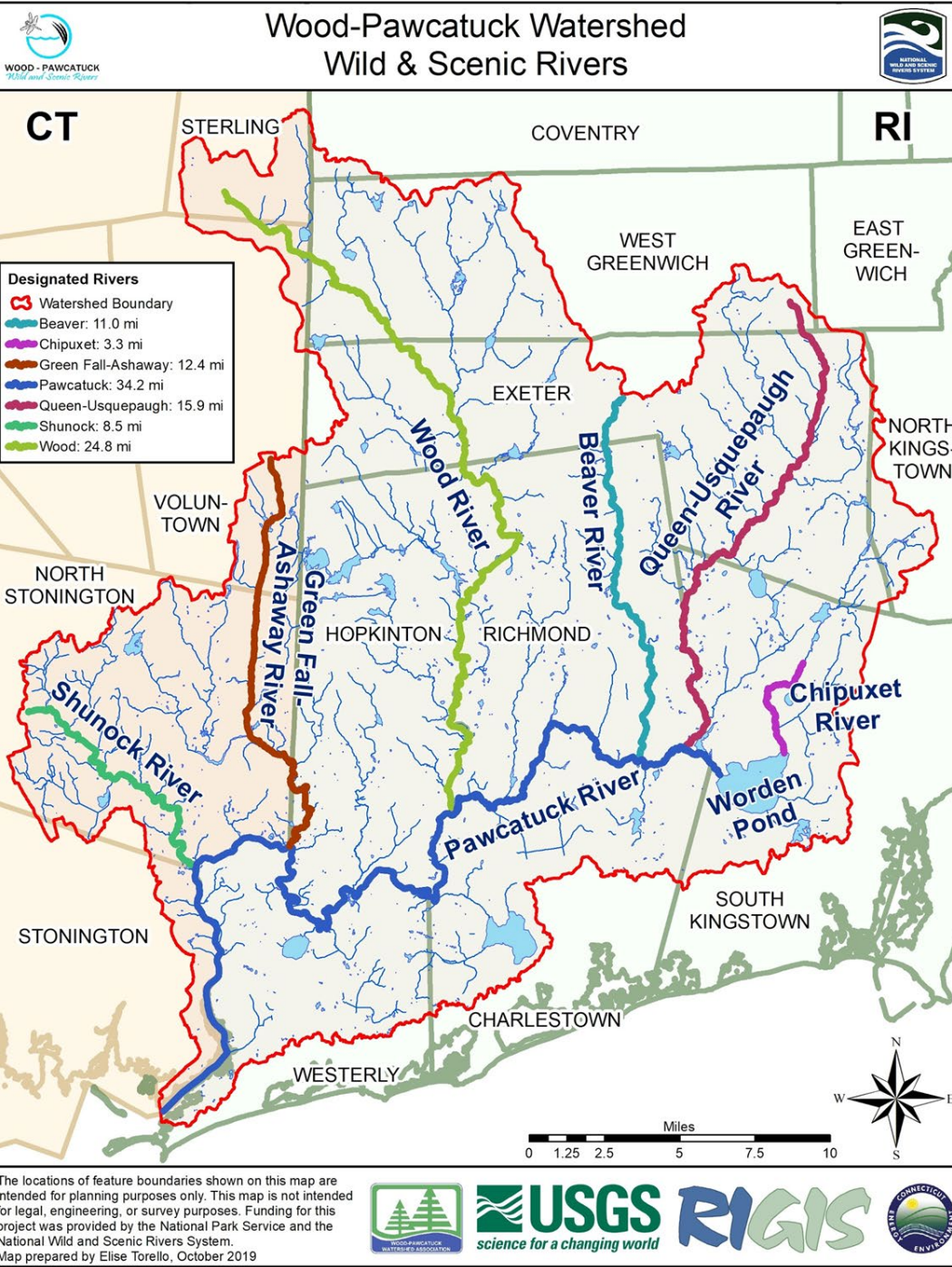
1870

**“Outstandingly
Remarkable Values”**

**4. Remarkable
Recreation and
Scenery**



Bill McCusker



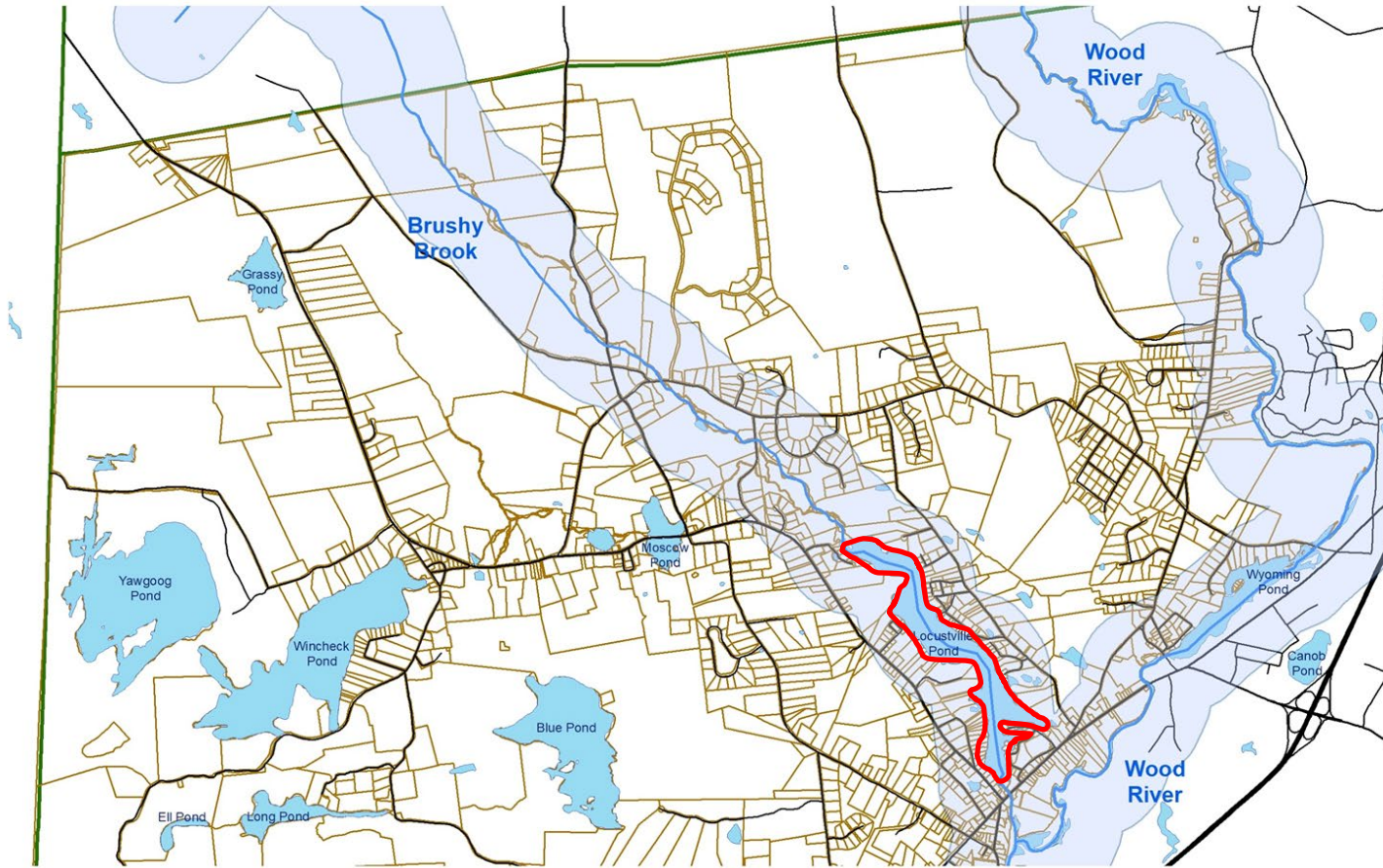
Designated Rivers

- Beaver River
- Chipuxet River
- Queen River
- Pawcatuck River
- Wood River
- Green Fall River
- Shunock River

The locations of feature boundaries shown on this map are intended for planning purposes only. This map is not intended for legal, engineering, or survey purposes. Funding for this project was provided by the National Park Service and the National Wild and Scenic Rivers System.
Map prepared by Elise Torello, October 2019



Hopkinton's Tributaries



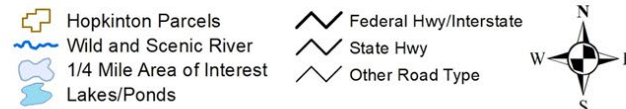
1. Brushy
2. Canonchet
3. Glade
4. Parmenter
5. Tomaquag

Hopkinton, RI

Wood-Pawcatuck Wild & Scenic Rivers:
Wood River, Pawcatuck River, Ashaway River,
Brushy Brook, Canonchet Brook, Glade Brook,
Parmenter Brook, Tomaquag Brook

Data credits: Hopkinton, RI GIS; [RIGIS](#)

Map Author: Elise Torello 12/21/20



Stewardship Council, Plan and Activities



Susan Shaw painting in a video by Ayla Fox

Stewardship Council

- Representatives from 12 Dedicated Towns
- Representatives from federal and state agencies and tribes
- Representatives from non-profit conservation organizations

Stewardship Council Goals:

- Implement the Stewardship Plan
- Outreach and education for towns and organizations
- Review and/or advocate for or against state and municipal laws, policies, ordinances, and development proposals
- Implement projects and programs



Audubon Society
of Rhode Island



The Stewardship Plan



Pawcatuck River at Avondale (Photo credit: Rebecca Woodward)

CHAPTER 6: ACTION STRATEGIES FOR THE FUTURE

Watershed threats

- Climate change
- Development
- Point-source pollution
- Habitat fragmentation
- Invasive species
- Limited resources for protected lands

Action Plans

- *Hydrology* – water quality, aquifers, flood resiliency
- *Ecosystem* – habitat, fisheries, invasive species, river health
- *Cultural* – cultural resources, agriculture
- *Scenic & Recreation* – fisheries, boating access, hiking/walking, public education, viewshed



Wood-Pawcatuck
Wild and Scenic
Rivers
Stewardship Plan
for the
Beaver, Chipuxet,
Green Fall-Ashaway,
Pawcatuck,
Queen-Usquepaugh,
Shunock, and
Wood Rivers



WOOD - PAWCATUCK
Wild and Scenic Rivers

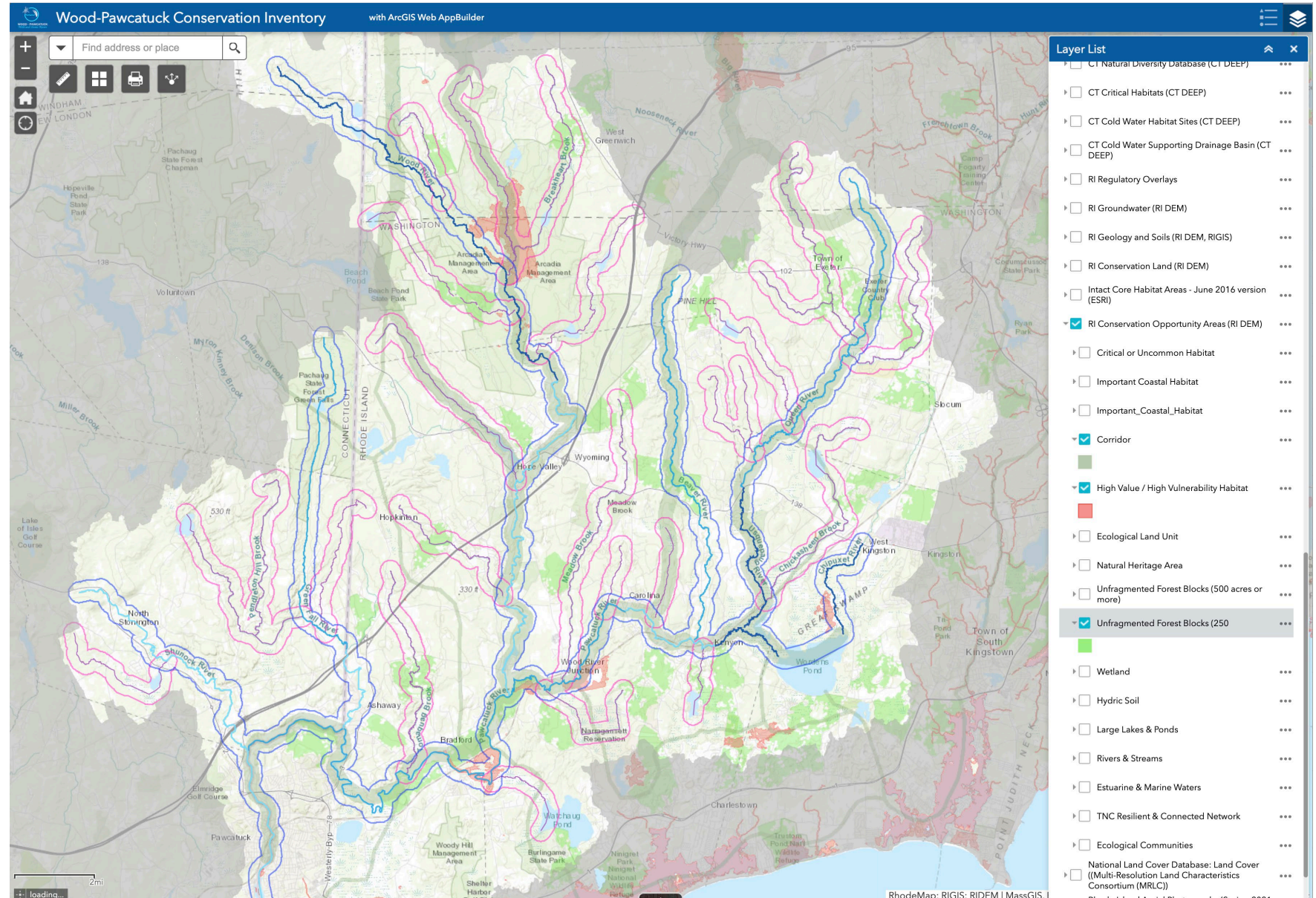
WOOD-PAWCATUCK
WILD & SCENIC
STUDY COMMITTEE

Located on our website: WPWildRivers.org

Interactive Watershed Environmental Resources Map

Watershed Wide

- Aquifers
- Brook Trout
- Dams
- Geology
- Hillshade
- Historic Sites
- Impervious
- Land Use
- Land Use within Quarter Mile Buffer
- Locator Map
- Natural Heritage Areas
- Protected Land
- Protected Land within Quarter Mile Buffer
- Recreation
- River Segment Classifications
- River Segments with Quarter Mile Buffers
- Rivers
- Unfragmented Habitat Cores
- Wetlands



Stewardship Council Activities



WOOD - PAWCATUCK
Wild and Scenic Rivers

Stewardship Council Committees

- Information and Education – Community Outreach
- Advisory – Advocacy and review
- Projects – Stewardship Council-led watershed projects and events

Wild and Scenic Community Grants

- Community and/or Municipality-led projects

Information and Education

- Installed signage on the ponds and lakes which have public access
- Conduct outreach efforts



WOOD - PAWCATUCK
Wild and Scenic Rivers



Advisory

Advocates for preservation of the Outstandingly Remarkable Values of the Watershed

Municipality level

- Reviews development plans, ordinances, and resiliency plans to protect and enhance the ORVs
- Supports creation of overlay districts and low impact development practices
- Creates a watershed-specific Environmental Resources Map

State level

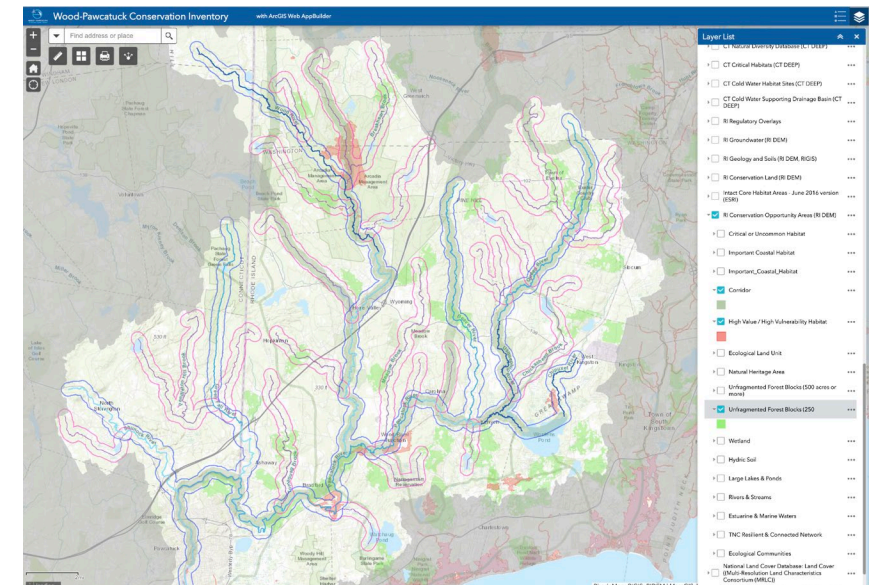
- reviews legislation to ensure protection of natural and cultural resources



Rhode Island Needs to Act on Forest Conservation

Recently approved Forest Action Plan cites the pressures caused by development

By Frank Carini / ecoRI News staff | March 26, 2021 | Share [f](#) [t](#) [e](#) [p](#)



Stewardship Council Activities in Hopkinton



Susan Shaw painting in a video by Ayla Fox

Low Impact Development



WOOD - PAWCATUCK
Wild and Scenic Rivers



Image courtesy of the New Hampshire DES
Soak Up the Rain Program



Low Impact Development



WOOD - PAWCATUCK
Wild and Scenic Rivers

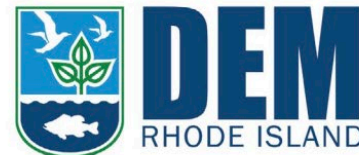
LID Municipal Assessment from RI Department of Environmental Management

“LID is both a site planning and design strategy that attempts to mimic natural treatment processes in soil and vegetation in order to maintain pre-development hydrology.” *(best management practices for stormwater management)*

The Stewardship Council is working with RI Nonpoint Education for Municipal Officials (NEMO) to help watershed municipalities complete the Assessment and identify ordinance changes that can incorporate LID

Towns involved this spring:

Richmond, West Greenwich, Hopkinton, South Kingstown



Projects

- Provides funding and support to projects, events and community grants



WOOD - PAWCATUCK
Wild and Scenic Rivers

Briggs Park Renovation

- Led by Stewardship Council's Projects Committee member Elaine Caldarone
- Partnership between Stewardship Council and Hopkinton Parks and Recreation Department
- Picnic tables, walking paths, kiosk etc.
- Approved by Recreation Commission and Town Council and in plan drafting stage



**Briggs Memorial Park,
Hopkinton, RI**

Data credits: Hopkinton, RI GIS; **RIGIS**
Map Author: Elise Torello 2/2/21

 Briggs Park
 2 Ft Contour Lines
 10' Contour
 2' Contour

0 50 100 200 300 400 Feet



Projects

- Created interactive “Water Trails” maps



WOOD - PAWCATUCK
Wild and Scenic Rivers



Wood-Pawcatuck Wild and Scenic Water Trails

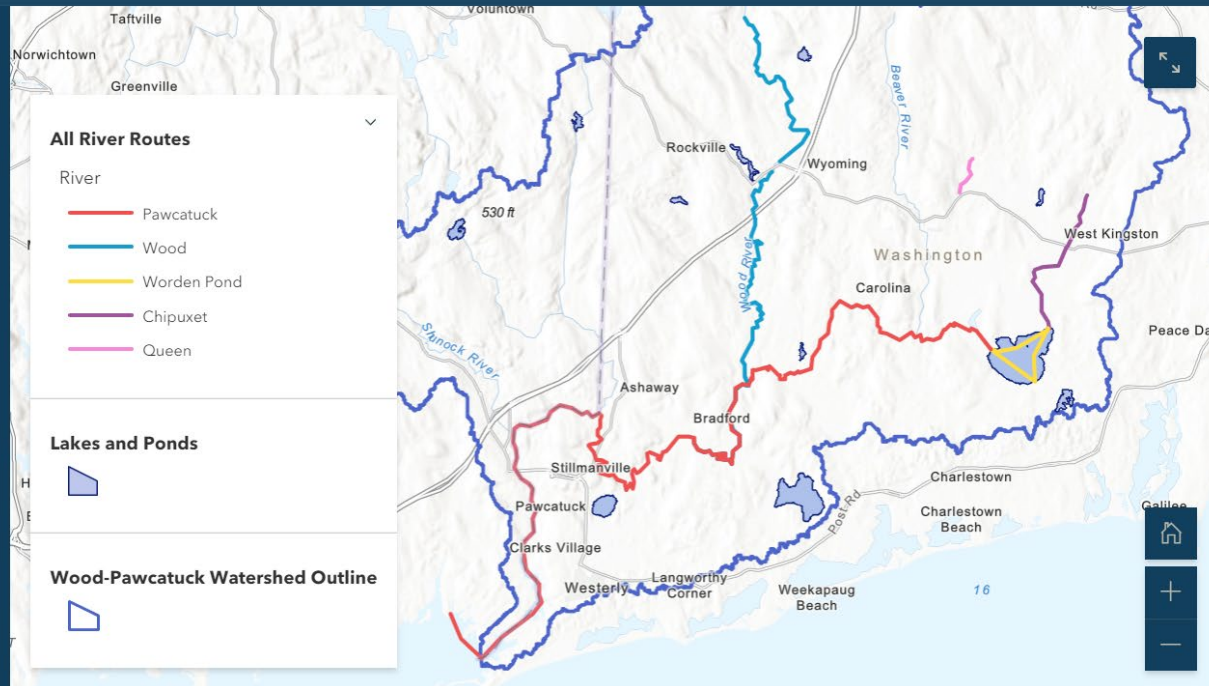


[So many places to explore!](#) [The Chipuxet River](#) [The Pawcatuck River](#) [The Queen River](#) [The Wood River](#) [Lakes and Ponds](#) [Photo Tour](#) [Final Thoughts](#)

So many places to explore!

The Wood-Pawcatuck watershed is full of beautiful places to explore, from quiet ponds and placid rivers, to open-water ponds and quick-moving rivers, to a tidal estuary. Birds are abundant, including raptors, herons/egrets, ducks, and songbirds. In spring and summer the wildflowers are spectacular, especially in the upper reaches of the rivers.

This following series of maps show the



7 Rivers Festival



WOOD - PAWCATUCK
Wild and Scenic Rivers

June 25 & 26, 2022

12 Towns • 7 Rivers • 1 Weekend

During National Rivers Month

Celebrating the Wild and Scenic Rivers Status, festival activities take place on or around Rhode Island rivers and a rare few in Connecticut now prestigiously designated as unique on a region and national scale.





WOOD - PAWCATUCK
Wild and Scenic Rivers

**Hopkinton Town
Representatives on the
Stewardship Council:**

Chip Heil

heilcw@gmail.com

David Augustyn

daugustyn972@g.rwu.edu

**Wild & Scenic Rivers
Coordinator:**

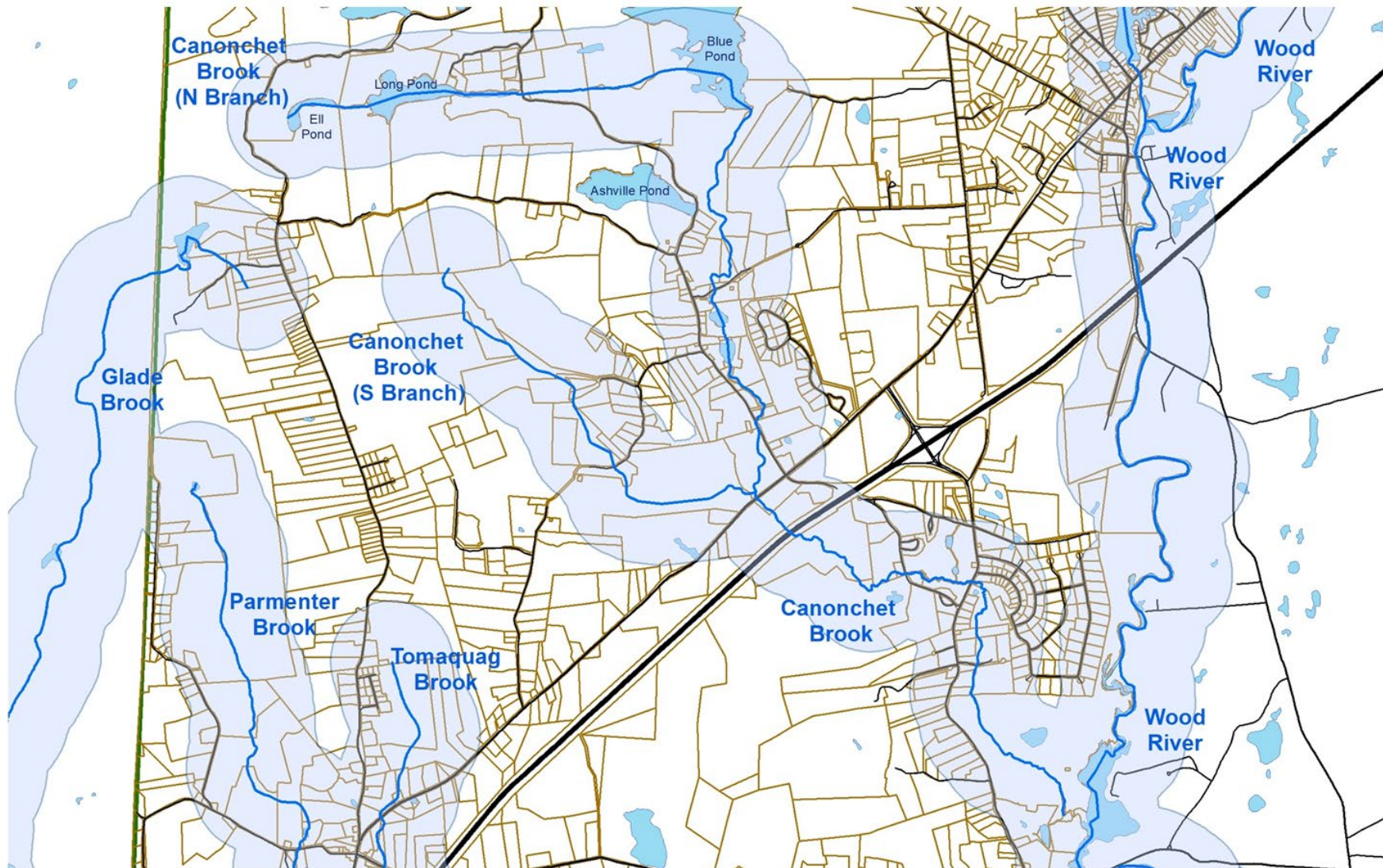
Kassi Donnelly

Kassi@wpwa.org

Website: <http://wpwildrivers.org/>

Facebook: @WPWildScenic

Twitter: @WPWildRivers



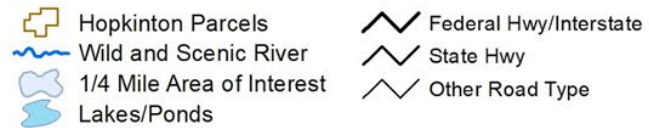
Hopkinton, RI

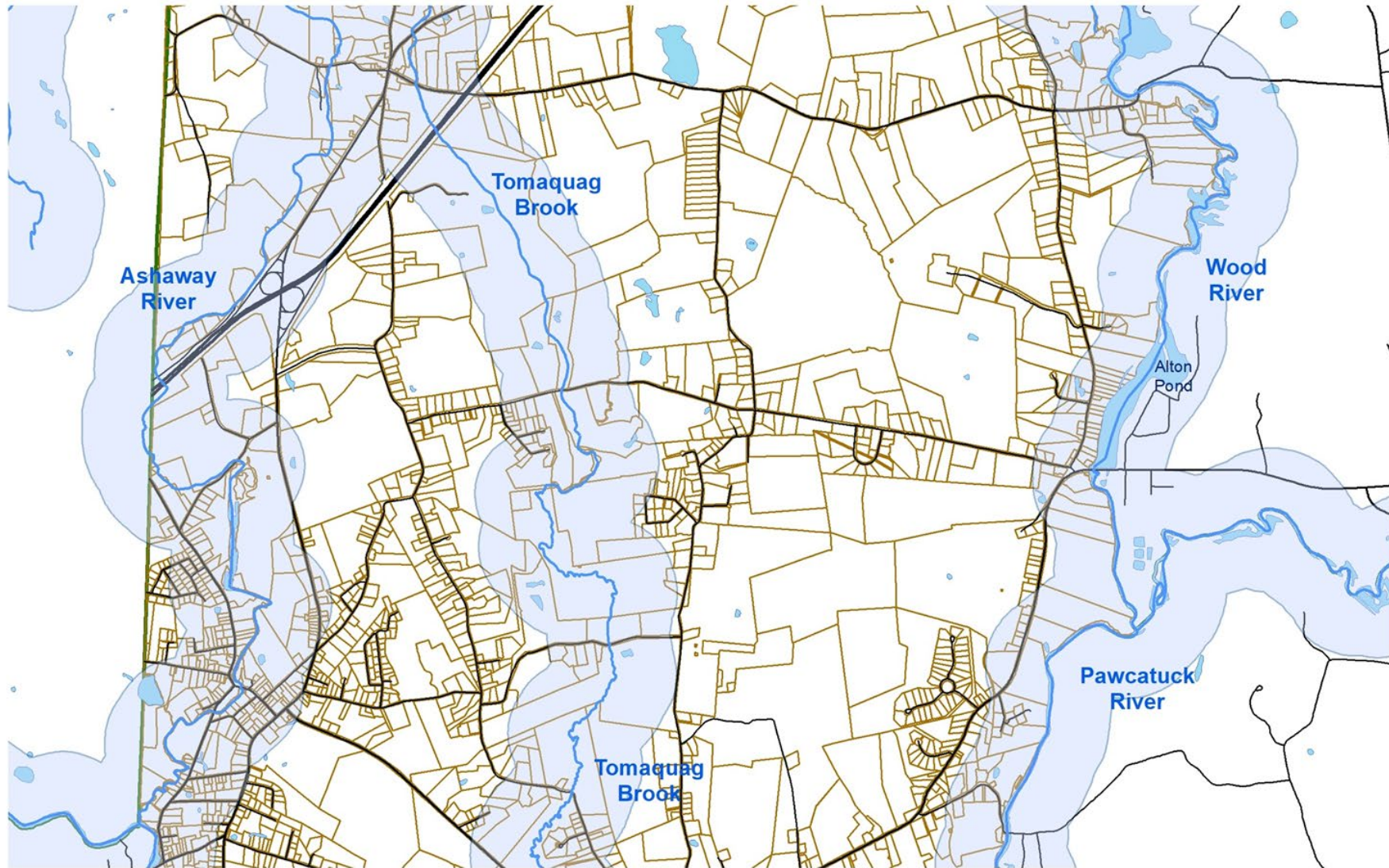
Wood-Pawcatuck Wild & Scenic Rivers:

Wood River, Pawcatuck River, Ashaway River,
 Brushy Brook, Canonchet Brook, Glade Brook,
 Parmenter Brook, Tomaquag Brook

Data credits: Hopkinton, RI GIS; **RIGIS**

Map Author: Elise Torello 1/5/21





Hopkinton, RI

Wood-Pawcatuck Wild & Scenic Rivers:

Wood River, Pawcatuck River, Ashaway River,
 Brushy Brook, Canonchet Brook, Glade Brook,
 Parmenter Brook, Tomaquag Brook

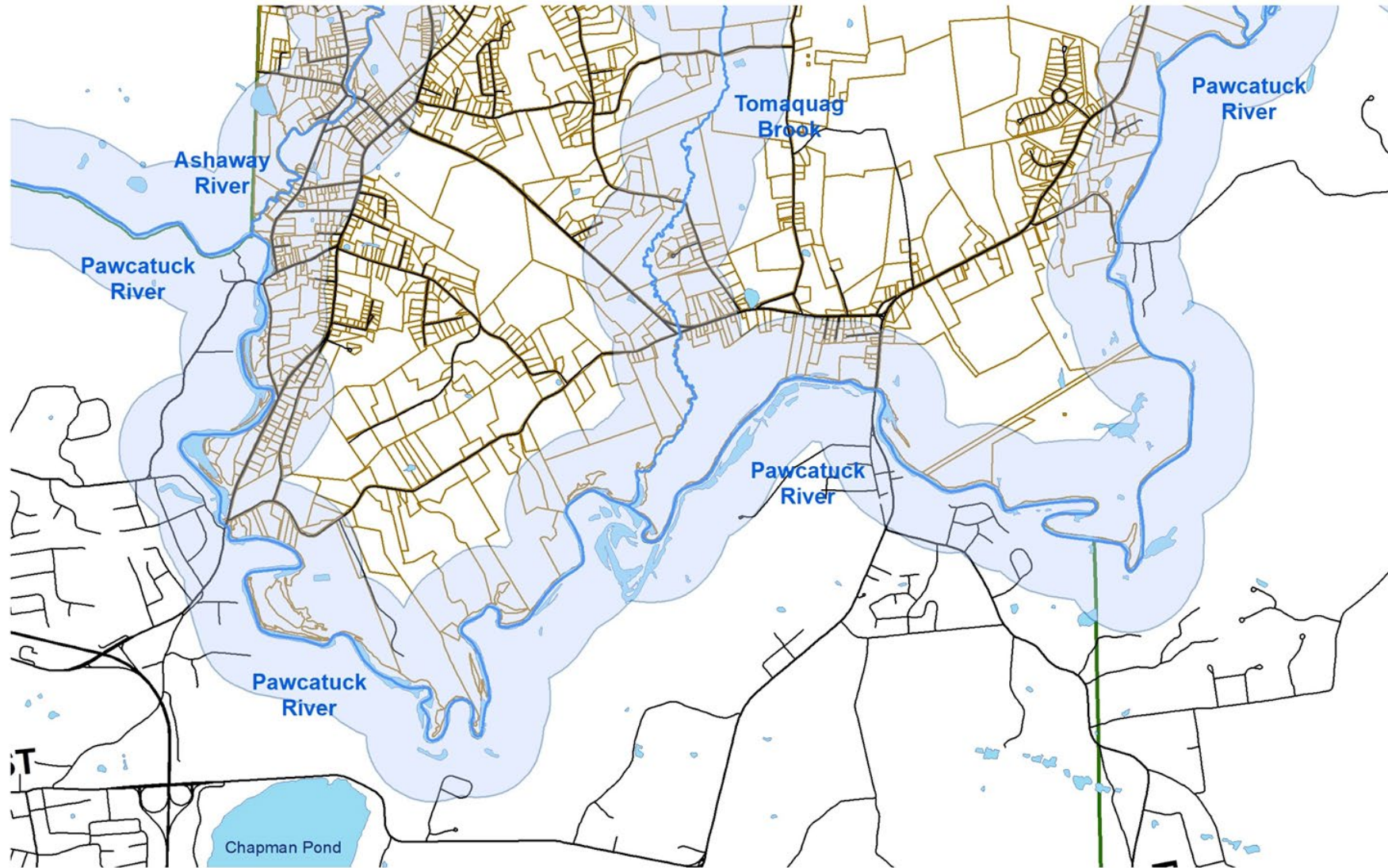
Data credits: Hopkinton, RI GIS; **RI GIS**

Map Author: Elise Torello 12/21/20



- Hopkinton Parcels
- Wild and Scenic River
- 1/4 Mile Area of Interest
- Lakes/Ponds
- Federal Hwy/Interstate
- State Hwy
- Other Road Type





Hopkinton, RI

Wood-Pawcatuck Wild & Scenic Rivers:

Wood River, Pawcatuck River, Ashaway River,
 Brushy Brook, Canonchet Brook, Glade Brook,
 Parmenter Brook, Tomaquag Brook

Data credits: Hopkinton, RI GIS; **RIGIS**

Map Author: Elise Torello 12/21/20



- | | |
|---------------------------|------------------------|
| Hopkinton Parcels | Federal Hwy/Interstate |
| Wild and Scenic River | State Hwy |
| 1/4 Mile Area of Interest | Other Road Type |
| Lakes/Ponds | |

